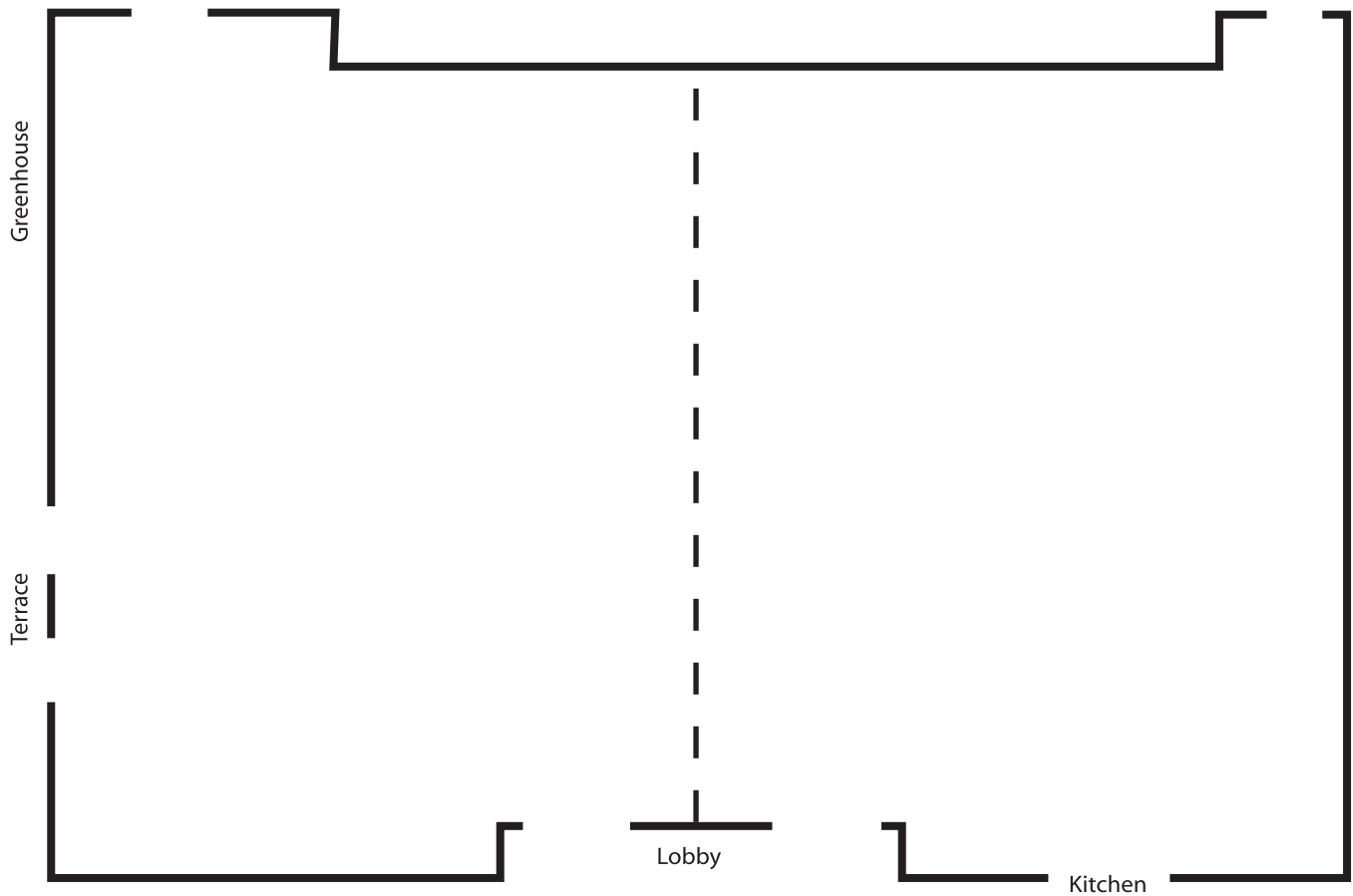


# BOTANICA — The Terrace Room

*The Wichita Gardens*



## *Specifics -*

- Size:** 65'-6" x 78'-6"
- Capacity:** 300 seated at 60" round tables,  
400 seated auditorium style
- Location:** The west side of the main lobby
- Set-up Options:** The room may be divided to hold less than 100 guests per side
- Uses:** Large banquets, parties, receptions, ceremonies, meetings

## *Tables -*

**Botanica has the following tables for your use:**

- Round:** 35 Round Tables  
Measuring 60" or 5' in diameter  
Can seat 6 or 8 people
- Rectangle:** 30 Rectangle Tables  
Measuring 32" x 96" or 8' long  
Can seat up to 8
- 5 Rectangle Tables  
Measuring 32" x 60" or 5' long